

Minnesota Waiver Overview

Minnesota Disability Support Alternatives (MNDSA)

Purpose of Waiver and Grant Programs

To keep disabled
person with family

To offer additional
services beyond
what insurance
covers

To keep people
interacting with
their community

Types of Waivers

CADI (Community Access for Disability Inclusion)

DD (Developmental Disabilities)

BI (Brain Injury)

CAC (Community Alternative Care)

EW/AC (Age 65+ Waivers)



Waiver Eligibility

Eligibility



Have MnChoices Assessment



Be enrolled in Medical Assistance



Certified Disabled:

Social Security Administration
(SSA)

State Medical Review Team (SMRT)



Meet Specific Waiver Criteria

MnChoices: What to Expect

- How long will it take?
- What type of information will they need?
- What type of questions will they ask?
- Who can attend with me?
- When are results available?


MnChoices – What to Expect

- Certified Disabled
 - Social Security Administration
 - State Medical Review Team (SMRT)
 - County will make referral
 - State will send forms in mail, a release, and assign intake worker
 - Forms must be returned as quickly as possible and be detailed
 - Process can take 3-4 months

MnChoices: Handout

DHS-72838-ENG 11-18

What you can expect with a MnCHOICES Assessment Minnesota Department of Human Services



Minnesota Department of Human Services
What you can expect with a
MnCHOICES Assessment

What is a MnCHOICES Assessment?

- It is an in-person visit with a MnCHOICES assessor to learn about your needs, goals and preferences to determine what kinds of supports you might be able to receive.
- It usually occurs where you are living.
- There is no cost to you.
- The assessment will occur within 20 calendar days of your request.

Who may have an assessment?

- Minnesotans of any age with disabilities or chronic care needs can ask for an assessment.
- You do not need to be eligible for Medical Assistance (MA) or any other publicly funded program to receive an assessment. However, to receive many of the services available following an assessment, a person will need to be eligible for Medical Assistance or another publicly funded program.

How will a MnCHOICES Assessment help me?

- It may help you better understand your support needs and how to get services to meet those needs.
- These services can help you stay at home or move home from a hospital, nursing home or other institution.
- If you qualify for publicly funded programs, it helps you access programs such as MA Waivers, Personal Care Assistance (PCA) or other long-term services and supports.
- If you do not qualify for publicly funded programs, it helps you learn about and have help accessing other support options.

Who can attend my assessment?

- Family members, friends or other people who help you may attend the assessment. If a family member or a legal representative provides services to you, they may participate in the assessment.
- With your permission, a paid provider of services can share information, in writing or via phone, before and/or after the assessment.
- You can request an interpreter to attend your assessment.



Traditional Waiver Option

Traditional Waiver Option “Restaurant”

The traditional option is like a restaurant where you are given a menu. You have to choose from only those options and have someone else make it for you.

- Assigned a case manager that oversees all aspects of waiver
- Items or services must meet a need based on the MnChoices
- Case manager approves each item as allowed based on need
- More structure and restrictions on spending
- Can not duplicate other state services

Traditional Waiver Option - Supports

- PCA (must go through an agency and pay is determined by agency)
- Nursing
- Independent Living Skills Worker
- Respite
- Equipment up to \$3,900 only



Consumer Directed Community Supports (CDCS) Option



Choose or design the services and supports that fit your needs.



Decide when you should receive services and supports



Hire the people you want (including parents and spouses) to deliver those services and supports



CDCS is like a home made meal. You choose the food and make it yourself.

CDCS Option “Home Made”

CDCS Option

CDCS is like a home made meal. You choose what food and make it yourself. You are given a CDCS budget and pick what best fits your family.

- Some examples of items that have been included in plans are:
 - Paid parent, Support Staff/PCA* (Pay determined by you)
 - Technology devices (Ipads, computers, communication devices)
 - Alternative therapies (horse therapy, music therapy)
 - Special diets (dairy free, high protein)
 - Home modifications (hard flooring, bathrooms)
 - Housekeeping/Lawn Snow Care (if no other caregiver available)
 - Sensory Items (swings, crash mats)
 - Phone/Internet
 - Nursing*

**If you are on a waiver, all PCA/Nursing must come out of the waiver funds and you can no longer use MA directly.*

Community Support Plan

(Budget determined by State and based on MnChoices)

Personal Assistance

- Paid Parent/Spouse
- Support Staff
- Caregiver Relief

Treatment and Training

- Licensed Services
- Nursing
- Habilitation Activities (i.e. Music Therapy, etc)

Environmental Modifications

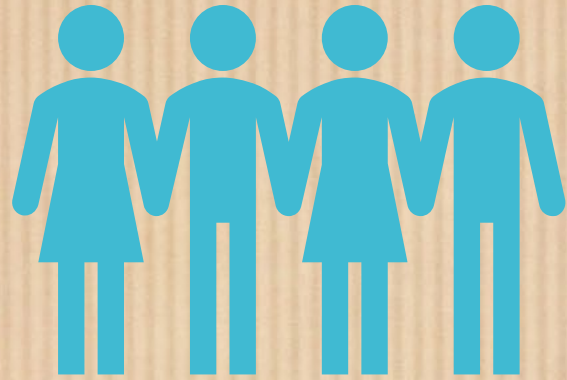
- Physical Supports
- Home Modifications
- Special Diets

Self-Directed Supports

- Fees
- Taxes
- Support Planning

Unallowable Expense Examples

- No attorney fees
- No animals
- No Medications, Supplements
- No adding square footage to home
- No items that are considered “typical parent/family responsibility”

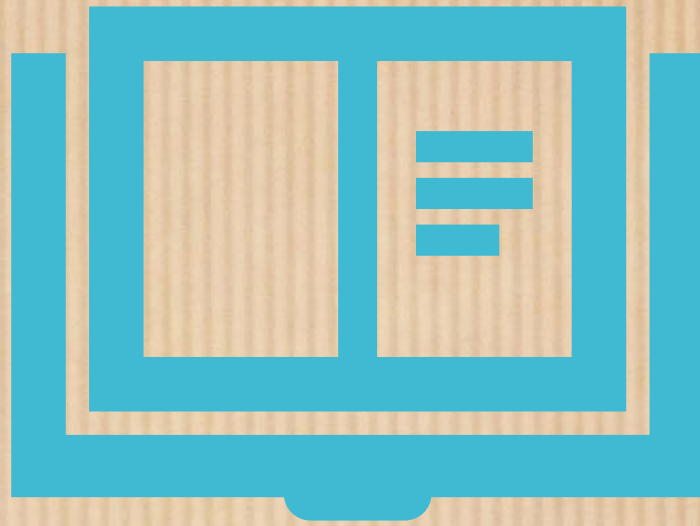


Consumer Support Grant (CSG)

Consumer Support Grant

Alternative if do not qualify for a waiver

- Be enrolled in or eligible for Medical Assistance
- Be eligible to receive home care services from the Medical Assistance Home Care Program
- Demonstrate limitations in everyday functioning, such as self-care, language, learning, mobility, self direction, capacity for independent living and economic self-sufficiency
- Require ongoing supports to live in the community
- Live in a natural home setting
- Live in a county that offers the Consumer Support Grant program.



Resources

Resources

- State Website on Waivers
 - <https://mn.gov/dhs/people-we-serve/people-with-disabilities/services/home-community/programs-and-services/hcbs-waivers.jsp>
- Ramsey County Intake
 - <https://www.ramseycounty.us/residents/assistance-support/assistance/people-disabilities/consumer-directed-community-supports>
 - 651-266-3613
 - RCMnChoices.Intake@ramseycounty.us
- Hennepin County Intake
 - <https://www.hennepin.us/residents/human-services/consumer-directed-community-supports>
 - 612-348-4111
 - socialservices@hennepin.us
- Anoka County Intake
 - <https://www.anokacounty.us/3343/How-to-Get-Started>
 - 763-324-1450
 - rss-ss-ltss-intake@co.anoka.mn.us
- Disability Hub
 - <https://disabilityhubmn.org/>
- Support Planners
 - <https://www.minnesotahelp.info/> (search “support planner”)